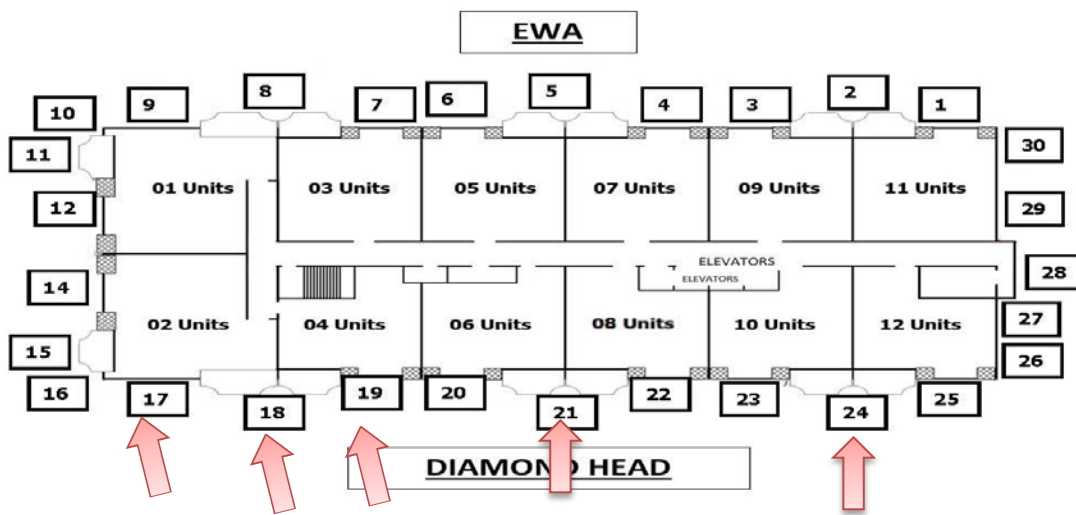




1350 ALA MOANA

Building Exterior Repair Schedule

| <u>Dates</u> | <u>Location</u> | <u>Activities</u> |
|-------------------------|-----------------|-------------------------------------|
| April 22 – May 31, 2019 | Garage | Prep, spall repair, caulk and paint |
| April 22 – 30, 2019 | Drop 24 | Prep, spall repair, caulk and paint |
| April 22 – May 10, 2019 | Drop 21 | Prep, spall repair, caulk & paint |
| April 22 – 26, 2019 | Drop 19 | Painting |
| April 22 – May 24, 2019 | Drop 18 | Concrete Repair, Caulk, and Paint |
| April 22 – 26, 2019 | PH 6/L6 | Concrete Repair, Caulk, and Paint |
| April 22 – May 17, 2019 | Drop 17 | Concrete Repair, Caulk, and Paint |



Dear Residents,

Work hours are from 8:00am to 4:30pm, Monday through Friday. There will be loud jackhammering and grinding noises throughout the day. **Please keep the windows closed on the stacks where the swing stage is located to prevent dust from entering the units and keep your curtains drawn for privacy as workmen and consultants will be passing by each unit daily.** Please observe all cordoned off areas and abide by all warning signage.

If you have any concerns with the work that has been performed on your lanai, please contact Meti Rama at 841-7602 or meti@sealmastershawaii.com.