

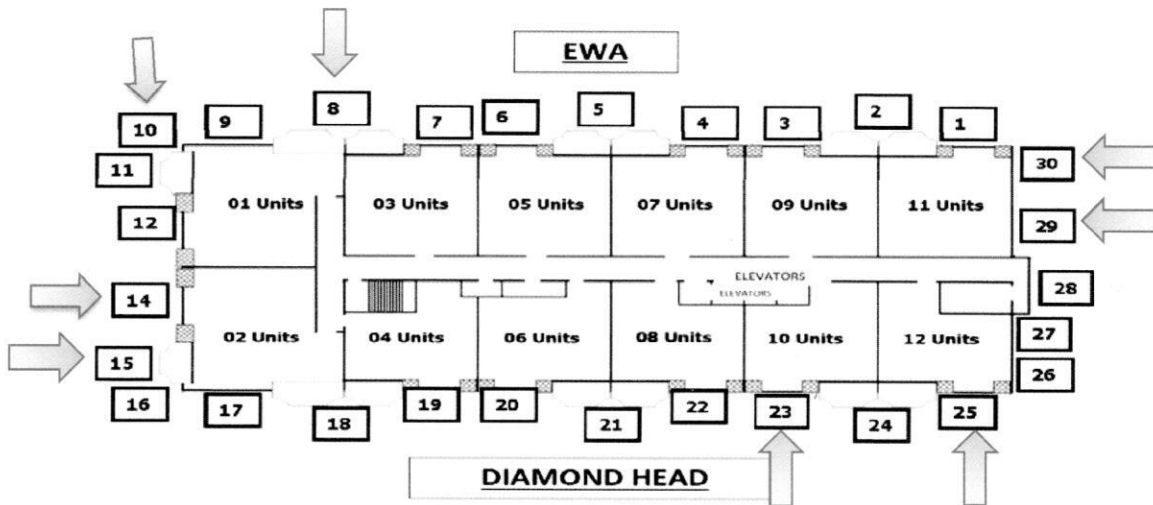


7/5/2018

1350 ALA MOANA

Building Exterior Repair Schedule

<u>Dates</u>	<u>Location</u>	<u>Activities</u>
July 9 – July 13, 2018	L7 & PH7 Ewa Side	Paint
July 9 – July 20, 2018	Drop 10	Prep, spall repair and paint
July 9 – July 27, 2018	Drop 25	Spall repair, caulk, paint and bird nets
July 9 – July 27, 2018	Drop 29 & 30	Prep, spall repair, caulk and paint
Scaffolding equipment will remain on the Mauka side of L7 through July 30.		
July 9 – July 27, 2018	Drop 15	Spall repair, caulk and paint
July 9 – August 31, 2018	Drop 8	Spall repair, caulk and paint
July 9 – September 28, 2018	Garage	Mobilize, prep, spall repair, caulk and paint
July 9 – August 3, 2018	Drop 23	Mobilize, prep, spall repair, caulk, paint and bird nets



Dear Residents,

Work hours are from 8:00am to 4:30pm, Monday through Friday. There will be loud jackhammering and grinding noises throughout the day. Please keep the windows closed on the stacks where the swing stage is located to prevent dust from entering the units and keep your curtains drawn for privacy as workmen and consultants will be passing by each unit daily. Please observe all cordoned off areas and abide by all warning signage.

If you have any concerns with the work that has been performed on your lanai, please contact Meti Rama at 841-7602 or meti@sealmastershawaii.com.

SKC
Meti Rama