



1350 ALA MOANA

CALENDAR

EXTERIOR RENOVATION PROJECT UPDATE

Stacks 01, 02, 03 & 12

EXPECT DELAYS DUE TO HIGH WINDS

EXTERIOR GARAGE

The contractor is performing the painting, scraping and concrete repair work on the exterior of the garage. The work is expected to take two months to complete.

**On occasion, residents will be asked to remove vehicles from the perimeter wall.*

BBQ AREA CLOSED FOR SAFETY

**Through end of August
Workdays only 7am-4:30pm**

RENOVATIONS

3001
2805
2307
1909
1906
1302

7/25/18



IMPORTANT NOTICE

**ATTN: Bike Owners parked by Exhaust Fan in AA Storage
Aug 3-10**

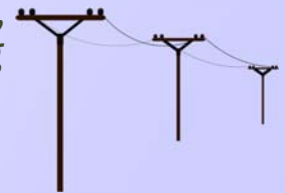
Bikes parked in the AA storage will need to be temporarily moved

while the large exhaust fan is removed. (See posting on bulletin boards & Mailroom)

1. Contact the front desk and they will direct you to an alternate parking area.
2. Bikes can be moved from Saturday July 28th but MUST be moved by Friday, August 3rd
3. Staff will store all bikes that are not moved.

Ala Moana Area Power Outages These outages should not affect this building.

The outages are from 10 pm to 6 am, Mondays through Thursdays. During these hours, motorists are asked to exercise caution while driving in the Ala Moana area. The outages are scheduled to last two more weeks.



On the days Ala Moana Mall is affected by power outages, the mall parking structure is locked down from 10 pm to 6 am. On these days, we are unable to issue parking passes after 10 pm; furthermore, parking pass recipients cannot retrieve their cars until 6 am.