



1350 ALA MOANA

CALENDAR

EXTERIOR RENOVATION PROJECT UPDATE

Stacks 01, 02, 03 & 12

EXPECT DELAYS DUE TO HIGH WINDS

EXTERIOR GARAGE

The contractor is performing the painting, scraping and concrete repair work on the exterior of the garage. The work is expected to take two months to complete.

**On occasion, residents will be asked to remove vehicles from the perimeter wall.*

BBQ AREA CLOSED FOR SAFETY

**Through end of August
Workdays only 7am-4:30pm**

RENOVATIONS

3001
2805
2307
1909
1906
1302
809

Trash Chute Cleaning Wednesday July 18th 8:30am-4:30pm



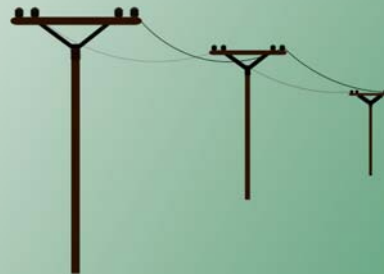
All trash room doors will be locked for chute cleaning. During this time you may dispose of your trash in the bins located on the second floor.

bins

Starting July 16, the Ala Moana area will be affected by overnight power outages.

These outages should not affect this building.

The outages will be from 10 pm to 6 am, Mondays through Thursdays. During these hours, motorists are asked to exercise caution while driving in the Ala Moana area. The outages are scheduled to last three weeks.



7/17/18

