



1350 ALA MOANA

## CALENDAR

### EXTERIOR RENOVATION PROJECT UPDATE

**Stacks 01, 02, 03 & 12**

**EXPECT DELAYS DUE TO HIGH WINDS**

#### EXTERIOR GARAGE

The contractor is performing the painting, scraping and concrete repair work on the exterior of the garage. The work is expected to take two months to complete.

*\*On occasion, residents will be asked to remove vehicles from the perimeter wall.*

#### BBQ AREA CLOSED FOR SAFETY

**Through end of August  
Workdays only 7am-4:30pm**

#### Trash Chute Cleaning

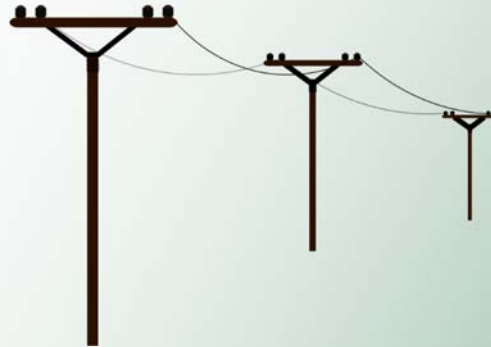
**Wednesday July 18th  
8:30am-4:30pm**

All trash room doors will be locked for chute cleaning.

During this time you may dispose of your trash in the bins located on the second floor.

#### RENOVATIONS

3001  
2805  
2307  
1909  
1906  
1302  
809



Starting July 16, the Ala Moana area will be affected by overnight power outages.

**These outages should not affect this building.**

The outages will be from 10 pm to 6 am, Mondays through Thursdays. During these hours, motorists are asked to exercise caution while driving in the Ala Moana area. The outages are scheduled to last three weeks.

7/13/18

