



PHONE (808) 591-8927 • FAX (808) 591-8945 • HONOLULU, HAWAII 96814

EMERGENCY PREPARATION INFORMATION

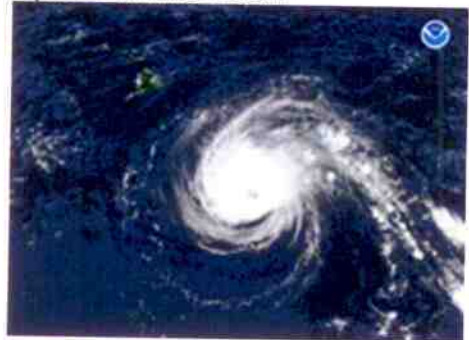
BASICS YOU NEED TO KNOW

- Hurricane Season runs from June 1 – November 10 every year.
- There is **NO** tsunami season. Tsunamis are a year-round, 24-hour -a-day threat and hazard to ALL shoreline areas of Hawaii.
- Tsunamis are most often generated by deep sea earthquakes or underwater landslides. Earthquakes cannot be forecasted or predicted.
- Earthquakes occur frequently in Hawaii. Our island home is in a volcanic and tectonically active region with rifts, faults and fissures cutting through every one of the major islands. The tectonic process of the earth's moving crust builds stresses along the faults. This sudden release of stress causes earthquakes on land and undersea. Volcanic activity on the Big Island also creates minor tremors.
- If you feel the ground shake, go inland or to higher elevations as soon as possible. This is the earth's natural tsunami warning.
- 1350 Ala Moana is within the Tsunami Evacuation Zone. In the event of an evacuation do not return to the area until the "all clear" has been announced by emergency officials.
- Do not tie up phone lines or cell phones with non-emergency calls. Increased cellular and land-line telephone traffic can severely hamper the ability to request emergency assistance from first responders.
- Rely on television and radio for the most current and up to date emergency information from the Department of Emergency Management.

WHAT DOES IT MEAN?

Watches vs. Warnings vs. Advisories

- [Hurricane/Tropical Storm Watch:](#) Hurricane/Tropical Storm conditions are possible within 36 hours.
- [Hurricane/Tropical Storm Warning:](#) Hurricane/Tropical Storm conditions are expected within 24 hours.



- [Flood Advisory:](#) Exercise caution due to hazardous driving conditions. Be alert for ponding and debris on roadway; slippery roads and poor visibility.
- [Flood Watch:](#) Flooding is possible. Be alert!
- [Flash Flood Warning:](#) Flooding is imminent or already occurring. Get to high ground if you are in a flood prone area.
- [Tsunami Watch:](#) Issued by Pacific Tsunami Warning Center (PTWC) after distant earthquakes with potential to create a tsunami in Hawaii. Tsunami waves are possible.
- [Tsunami Warning:](#) Issued whenever tsunami waves have been confirmed by PTWC and/or a damaging wave is detected.
- [Urgent Local Tsunami Warning:](#) Issued when a local earthquake has occurred and damaging waves are probable. Wave travel time may be as short as 10-20 minutes.

BE PREPARED

Get an Emergency Supply Kit, which includes items like non-perishable food, water, a battery powered or hand-crank radio, extra flashlights and batteries. Your Emergency Supply Kit should be readily accessible. You may want to prepare a portable kit and keep it in your car in case you are told to evacuate. While the materials listed are a good start, there is no kit that can provide all the supplies that individuals may need in an emergency. Your kit should be customized based on your own personal needs.

Recommended Items for a Basic Emergency Supply Kit:

- **Water**, one gallon of water per person per day for at least three days, for drinking and sanitation
- **Food**, at least a three-day supply of non-perishable food



- **Radio** (battery powered/hand crank) and a **NOAA Weather Radio** with tone alert
- **Flashlight** and **extra batteries**
- **First aid kit**
- **Whistle** to signal for help
- **Dust mask**, to help filter contaminated air and **plastic sheeting** and **duct tape** to shelter-in-place
- **Moist towelettes**, **garbage bags** and **plastic ties** for personal sanitation
- **Wrench** or **pliers** to turn off utilities
- **Can opener** for food (if kit contains canned food)
- **Local maps**
- **Cell phone with charger**, **inverter** or **solar charger**

Additional Items to Consider:

- Prescription medications, vitamins, and glasses
- Infant formula and diapers
- Pet food and extra water for your pet

- Important family documents such as copies of insurance policies, identification and bank account records in a waterproof, portable container
- Cash or traveler's checks and change
- Emergency reference material such as a first aid book or information from www.ready.gov
- Sleeping bag or warm blanket for each person
- Complete change of clothing including a long sleeved shirt, rain gear, long pants and sturdy shoes.
- Household chlorine bleach and medicine dropper - when diluted nine parts water to one part bleach, bleach can be used as a disinfectant. Or in an emergency, you can use it to treat water by using 16 drops of regular household liquid bleach per gallon of water. Do not use scented, color safe or bleaches with added cleaners
- Fire Extinguisher
- Matches in a waterproof container
- Feminine supplies and personal hygiene items
- Mess kits, paper cups, plates and plastic utensils, paper towels
- Paper and pencil
- Books, games, puzzles or other activities for you or for children
- Super absorbent towel for each person

MAKE A FAMILY EMERGENCY PLAN

Your family may not be together when disaster strikes, so it is important to know how you will contact one another, how you will get back together and what you will do in case of an emergency. You should also consider:

- Identify an out-of town contact. It may be easier to make a long-distance phone call than to call across town, so an out-of-town contact may be in a better position to communicate among separated family members
- Be sure every member of your family knows the phone number and has a cell phone, coins, or a prepaid phone card to call the emergency contact. If you have a cell phone, program that person(s) as "ICE" (*In Case of Emergency*) in your phone. If you are in an accident, emergency personnel will

often check your ICE listings in order to get a hold of someone you know. Make sure to tell your family and friends that you've listed them as emergency contacts

- Teach family members how to use text messaging. Text messages can often get around network disruptions when a phone call might not be able to get through



- Subscribe to alert services. Many communities now have systems that will send instant text alerts or emails to let you know about bad weather, road closings, local emergencies, etc. Sign up by visiting the Nixle website to obtain alerts regarding emergencies such as watches and warnings for tsunamis, flooding and other city wide information to your registered wireless devices and email accounts.

www.nixle.com

Depending on your circumstances and the nature of the emergency, the first important decision is whether you stay where you are or evacuate. Since 1350 Ala Moana is within the Tsunami Evacuation Zone, you would evacuate if instructed, but we recommend that you plan for both possibilities. Use common sense and available information, including what you are learning here, to determine if there is an immediate danger. In any emergency, local authorities may or may not immediately be able to provide information on what is happening and what you should do.

PUBLIC EMERGENCY SHELTERS

Emergency Shelters will be opened selectively depending on the severity and type of incident or disaster. Identify the location of your two nearest shelters but do not go there until instructed to do so. Consider the following:

- Listen to radio and television for shelter locations, instructions and opening schedule.
- Be aware that all shelters: General Population, Special Needs and Pet Friendly do not stock supplies. You must bring all

of your emergency supplies with you.

- If you know someone who does not speak English or someone who, due to a disability cannot receive emergency information readily, we highly recommend forming a core group of family or friends who can assist with translations or providing important emergency information as well as assisting with disaster preparedness actions and if needed, evacuation.

- **Emergency Shelters on this list fall into three categories:**

- **General Population Shelter:** General Population Shelters provide refuge for the general population only. Be aware that all shelters including those designated as Special Needs and Pet Friendly do not stock supplies. You must bring all of your emergency supplies with you. You will need at least two days worth of food, water, clothing, medical supplies and personal items for yourself and family members. If you have pets or a family member with special needs, see the following shelter options. *NOTE: If you are sick when reporting to a shelter please notify shelter staff as soon as you arrive.
- **Special Needs Shelter – Designated (S):** Special Needs Shelters have been developed by the State of Hawaii to assist those with disabilities who do not require hospitalization, but whose medical or health needs require more attention than is available in a general population shelter. Locations of Special Needs Shelters will be broadcast over TV and radio. Facilities designated to serve as Special Needs Shelters provide limited support to persons with special health needs. Special Needs evacuees must bring all of their own equipment and supplies, be capable of taking care of their own needs or be accompanied by a caregiver. *NOTE: If you are sick when reporting to a shelter please notify shelter staff as soon as you arrive.
- **Pet Friendly Shelters – Designated (P):** Pet Friendly Shelters have been developed by the State of Hawaii and are collocated with some general population shelters. Household pets entering a pet friendly shelter must be in a pet carrier for safety and owners should provide at least a two day supply of water and food for their pets. In addition owners

will be responsible for feeding, cleaning, and exercising their pets and may be asked to assist shelter staff. If the pet shelter is not yet available, keep your pet in its carrier parked in your vehicle in a shaded and protected area next to the shelter. Make sure that your vehicle provides adequate ventilation. *NOTE: If you are sick when reporting to a shelter please notify shelter staff as soon as you arrive. In some instances shelters may be multi-purpose serving the general population. Pets and those with Special Needs. These shelters are designated (S/P).



Listen to the NWS for advisories, watches, and warnings. On Oahu, listen to KSSK-AM 590 kHz, and KRTR-FM, 96.3. For additional information please check the following recommended websites :

- www.nhc.noaa.gov/outreach/prepared_week_shtmc - National Hurricane Center
- www.phc.noaa.gov/hnl/cphc/ - Central Pacific Hurricane Center
- www.weather.gov/ - National Weather Service
- www.fema.gov/ Federal Emergency Management Agency
- www.ready.gov/ - Disaster Response Emergency Kits
- www.redcross.org/ - American Red Cross
- www.I.Honolulu.gov/dem/ - Department of Emergency Management
- scd.Hawaii.gov/ - State Civil Defense

The following is a list of Public Emergency Shelters that would apply to our specific area:

Punchbowl-Waialae and Vicinity

- Aliiolani Elementary [S]
- Anuenue Elementary
- Hawaii Convention Center [S]
- Hokuiani Elementary [S]
- Jarrett Middle [S/P]
- Ka ahumanu Elementary
- Kaimuki High [S/P]
- Kaimuki Middle [S/P]
- Kuhio Elementary
- Liholiho Elementary [S]
- Lincoln Elementary
- Lunalilo Elementary
- Manoa Elementary [S]
- McKinley High [S]
- Neal Blaisdell Center [S]
- Noelani Elementary [S]
- Paolo Elementary [S]
- Waialae Elementary [S]
- Waikiki Elementary
- Washington Middle [S/P]
- Wilson Elementary [S]

STAY INFORMED

Television/Radio/Websites/Etc.

Evacuation zones can be found in an updated 2011 copy of the telephone book. Watch TV, listen to the radio or check the Internet often for information or official instruction as it becomes available. Turn on your radio and TV for live video broadcast statewide via the Hawaii Interactive Television System (HITS).

HANDY TELEPHONE NUMBERS

Police/Ambulance.....	911
Elderly/Disabled Assistance.....	523-4545
Or.....	527-5863
Or.....	523-4215
Voice or TTY Service.....	527-6300
Department of Emergency Management.....	723-8960
TTY Service.....	527-5476
Pacific Gateway Center (Foreign Language Translation Service).....	848-0936/845-3918
American Red Cross.....	734-2101
Hawaii State Civil Defense.....	733-4300
Dept. of Emergency Management.....	723-8960